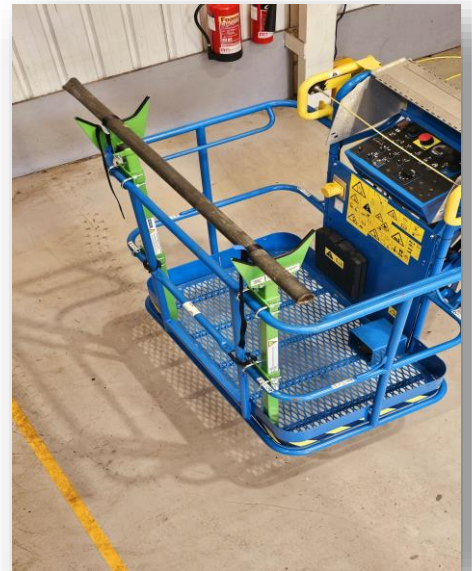


Our BR-01 is a heavy duty pipe rack attachment designed for all boom lifts



Key Features

- Weight is applied through the machine deck
- 90 kg capacity
- Securing straps
- Sturdy bracketry and locking nuts ensure a firm and secure fitment to any boom lift

Benefits

- Aids operatives with the safe elevation of materials to height
- Improves productivity and reduces manual handling issues
- Reduces mewp handrail damage
- Complies with HSE regulations and guidance



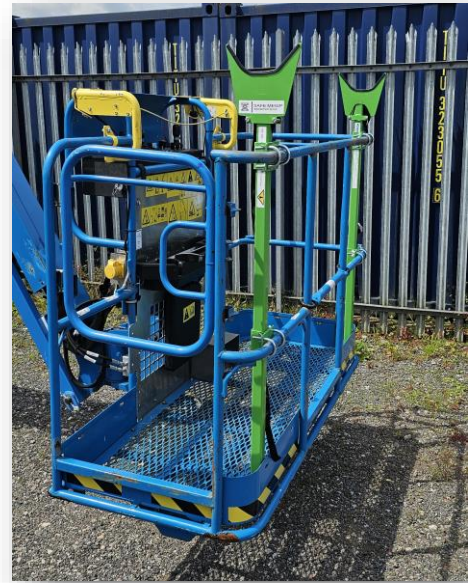
Compatibility

- Compatible with all boom lift mewp's
- Can be used on boom lifts equipped with 8 ft cages or 6 ft cages with side entry point only

Guidance

When using the BR-01 material handling attachment, mewp users should be assisted in satisfying the following:

- i. PUWER - requires that the work equipment provided is "suitable for use".
- ii. LOLER - requires that lifting equipment (any equipment... including accessories ... used at work for lifting or lowering loads) is sufficiently strong and stable, positioned or installed to prevent the risk of injury and visibly marked for its safe use (SWLs etc). Evidence of a thorough examination must be provided.
- iii. Industry Guidance - HSE information sheet CIS58 "The Selection and Management of MEWPs" states that an "appropriate material handling attachment" should be considered to "reduce the risk of overturning and remove the need to balance materials on the MEWPs handrails and minimise the risk of injury due to manual handling".



BR-01 Technical Specifications

- Maximum working load - 90 kg
- Attachment weight -12.1 kg
- Extra heavy duty non slip rubber applied to jaws to reduce material movement
- Material securing straps
- Jaw width-22 cm
- Jaw depth-9 cm
- Maximum product dimensions- 145 cm x 24 cm (per stand)
- Maximum length of materials permitted-User defined after conducting a full risk assessment and varies dependant on the type of materials to be elevated
- 24/7 365 days a week product after sales support

